

About Me

Michael Ingles
Shoreline Community College – Biotechnology Lab Specialist Certificate
I am interested in chemistry and biology but also honing my skills to the best of my ability. What motivated me to apply for the Lab Launch program was to take a peek into the lab work and environment of clinical research and its impact on the global community.

Overview of CRSP

Director of Clinical Research Specimen Processing
Daniel Schullery

Our goal is to support the advancement of clinical studies ranging from small to large with a strong focus on quality control. We accomplish this goal through the processing, storage, and distribution of research specimens for analysis by those studies.

Common Research Specimens Include

- Blood
- Bone Marrow Aspirate
- Tears
- Oral Swabs
- Urine
- Feces

The Major Processing Technique

- Fractionation of Whole Blood Into
 - Serum
 - Plasma
 - Ficoll gradient separated PBMCs

We work with researchers within the Seattle Cancer Care Alliance (Fred Hutch, University of Washington, Seattle Children's Cancer Consortium) and researchers from around the world.



>500

Hutch trials

We've partnered in more than 500 clinical trials at Fred Hutch alone.

>93

years experience

We bring our deep collective experience into our collaboration with you.

24/7

monitoring

Our biorepositories are in controlled, continuously monitored facilities.

Highlight of my Internship

Liquid Nitrogen Storage

Just as processing is one part of what we do, there is also the storage of research specimens.

This is done through first freezing the PBMCs inside a cool cell within a -80°C freezer then transferring them to a liquid nitrogen storage.



Blood Smear

I was able to practice blood smears for the first time using two different techniques displayed by the other technicians in the lab.

It is definitely a skill that needs to be practiced to get consistent quality results.

Acknowledgements

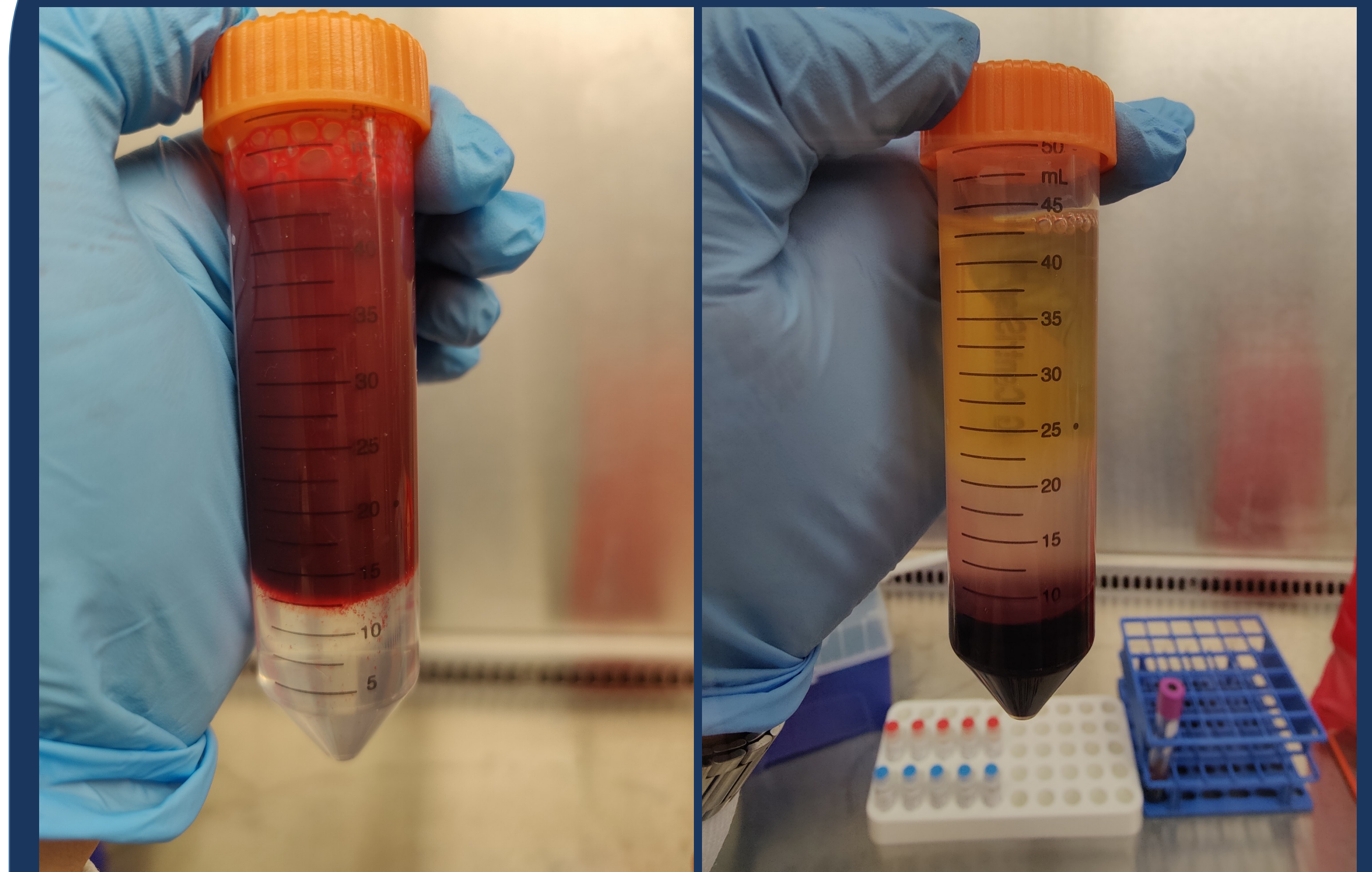
Daniel Schullery, Angela Bryce, Henry Donahue, Trent Johnson Ivan Torres Rios, John Milodragovich, Rick Sanders, and Leonor Busuego. I would love to thank them again for all their help, being very welcoming, and allowing me to be a part of their team.

Another thank you to both Mary Grace Katusiime and Jeanne Chowning for the creation of Lab Launch and allowing me to participate and grow.

CRSP and Fred Hutch

We directly connect to the mission of Fred Hutch. This is done via the advancement of clinical research to prevent and eliminate cancer and infectious diseases.

Fractionation of Whole Blood Using a Ficoll Gradient



A lot of specimen processing involved isolation of PBMCs so performing a Ficoll layer was a major technique I was able to gain more experience and practice with.

However, that was just one part of the process.



Careful storage and mapping of PBMCs is also important for organization and distribution of processed samples.