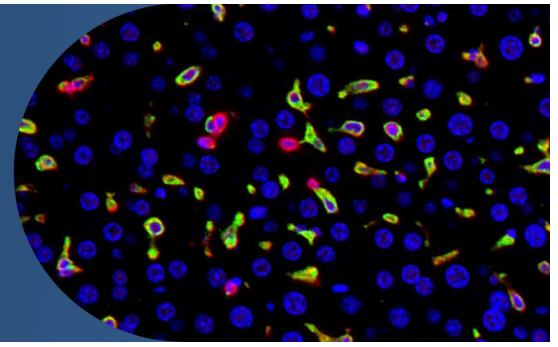


Experimental Histopathology

Research Administration

Seattle, WA • 501(c)(3) Nonprofit



Fred Hutch's Shared Resources are catalysts for lifesaving discoveries. This uniquely centralized program of 15 specialized core facilities and scientific services drives advances by integrating dedicated experts and cutting-edge technologies across the entire research pipeline, from basic science to clinical trial.

Hardware:

- Leica LMD6
- Laser type: Diode pumped, solid state
- Wavelength: 355nm
- Avg. pulse energy: 70µJ
- Repetition Rate: 80Hz

Camera

- Leica DFC7000 T
- Brightfield and fluorescence (DAPI, FITC, up to Cy5.5)
- More information about Leica DFC7000 T

Camera Sensor

- Sony® ICX674AQG CCD, EXview HAD II technology, quad-tap
- 2.8 megapixels
- Exposure time 4 µsec – 200 sec

Scope/Laser

- Detailed technical specifications

Capabilities

- Single cell isolation
- Precise analysis in routine and custom antibody validations
- Isolation of cells and tissues from both FFPE and frozen (OCT) sections
- Isolation of cells and tissues on H&E, chromogenic DAB IHC, and immunofluorescent slides
- Any species



LEARN MORE

Experimental Histopathology
Amanda Koehne, D.V.M.,
Ph.D., DACVP
Director
206.667.6971
akoehne@fredhutch.org

